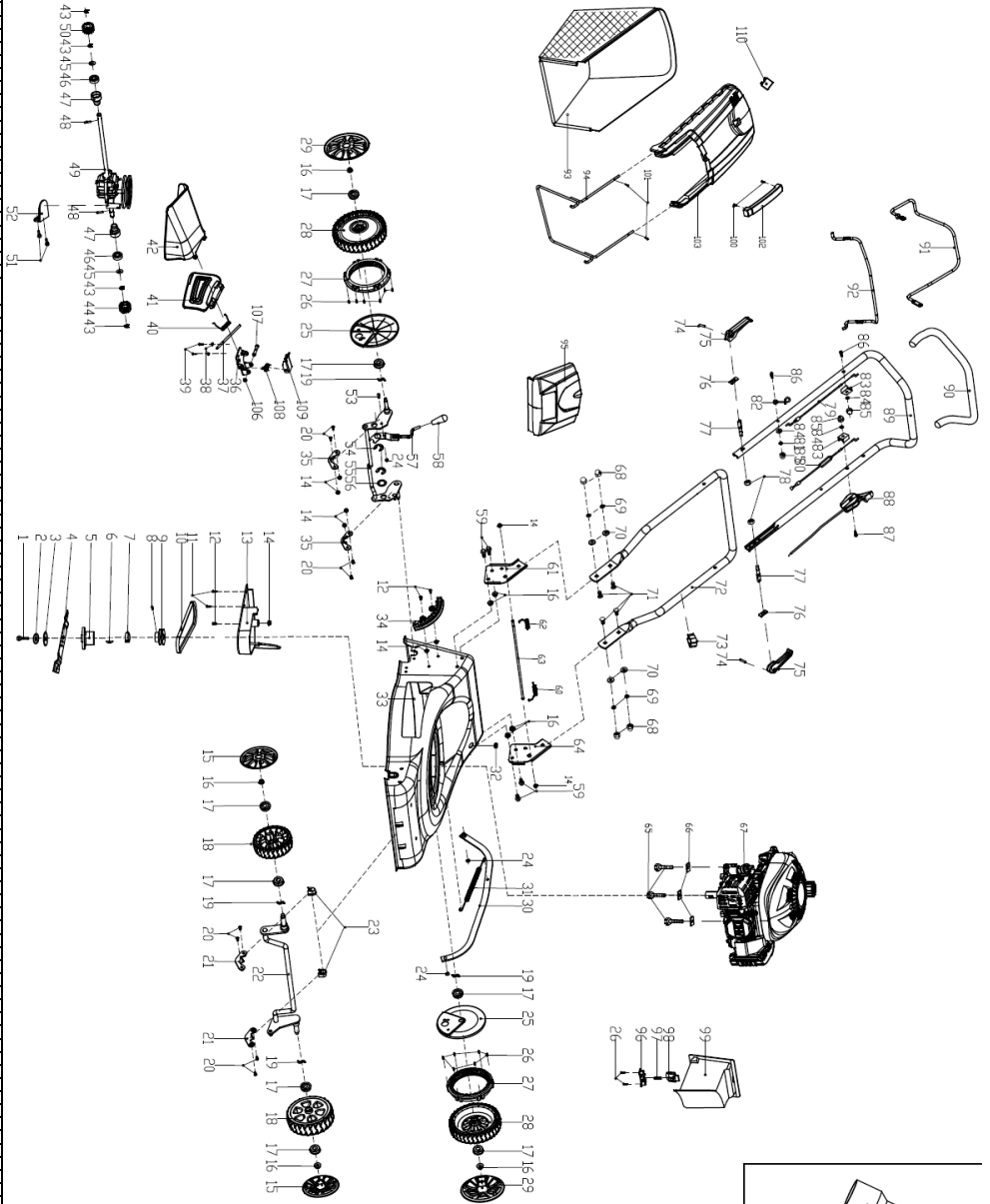


CORTACÉSPED CAMON DYM 1626CQ

NºFig.	Reference	Descripción(en)	Nº(pcs)
1	A26800606201	bolt	1
2	2105300001C	dishing washer	1
3	2105200245A	blade support press plate	1
4	2105200263A	blade	1
5	2105200251A	pressing blade support	1
6	A26809001201	woodruff key	1
7	21021000020001A	blade support sheath	1
8	A26800300502	screw	1
9	2102300109B	driving pulley	1
10	2102600036N	belt	1
11	A26800103701	self-driving screw	2
12	A26800202001A	trigger screw	3
13	21021000460001N	belt protecting cover	1
14	3032306001	lnut	9
15	210611002670006B	wheel cover-1	2
16	A26800502801	wheel cover-2	8
17	2101300065A	bearing	8
18	21011002660001A	wheel ass'y	2
19	A26800706202	wave washer	4
20	A26800201901	trigger screw	8
21	2101200011B	wheel axle fixed pressing plate	2
22	2101500120B	front wheel axle ass'y	1
23	21011000290001A	fixed ring for front axis	2
24	A26800500501	nut	3
25	21011003730001F	11" dust-proof wheel cover	2
26	A26800100501	self-tapping screw	14
27	2101100081B	wheel gear ring	1
28	21011002650001A	wheel ass'y	1
29	21011000620006C	wheel cover-1	2
30	2106200519B	connection rod ass'y	1
31	2102600063N	connection rod spring	1
32	2106600012A	cable protection sheath	1
33	21035001040002B	deck	1
34	21061001694017B	height adjustment board	1
35	2106200128A	wheel axle fixed ring	2
36	2103200228A	side discharge fixed board	1
37	2106200053N	side discharge position fixing shaft	1
38	A26800800402	spring washer	2
39	A26800201501	trigger screw	2
40	2109800024A	side discharge board spring	1
41	21061000760001A	side discharge cover	1
42	21041000390001A	side discharge protection cover	1
43	A26800900201	open block ring	4
44	2104400013E	left output gear ass'y	1
45	A26800705102	flat washer	2
46	A26800402302	bearing	2
47	2102400151A	bearing sheath	2
48	A26809000102	gear	2
49	2102300065A	gear box	1
50	2104400014E	right output gear ass'y	1
51	A26800611201	hexagon flange bolt	2
52	2102200040A	position fixing board	1
53	A268002031A	screw	1
54	A26800900301	open block ring	2
55	2101500121B	rear axis ass'y	1
56	2109200020A	adjustment washer	1
57	2106300079A	handle ass'y	1
58	21012000182A	handle sheath	1
59	A26800606401	hexagon flange bolt	4
60	2106800007A	left spring	1
61	21062004490002B	right handle bracket	1
62	2106800006B	right spring	1
63	2101300006A	long pole	1
64	21062004490002B	left handle bracket	1
65	A26800601701	bolt	3
66	2103300032A	square washer	3
67	60400107701	engine	1
68	3033302001	lid shape nut	4
69	A2680090202	spring washer	4
70	A26800700701	flat washer	4
71	A26800601903	bolt	4
72	21062000920001A	lower handle	1
73	21061000013201A	cable clip	1
74	2109300063A	pin	2
75	21061000270002A	lock handle	2
76	2106200001A	pressing plate	2
77	2106300008A	lock handle bolt	2
78	A26800500801	lock nut	2
79	2106800397A	flameout cable ass'y	1
80	2106800211B	driving cable ass'y	1
81	A26800800303	spring washer	1
82	2106300002A	cable hook	1
83	21061000043201A	cable fixing plate	2
84	A26800700801	flat washer	3
85	A26800501603A	lid shape nut	3
86	3091307003	bolt	2
87	3091307013	bolt	1
88	2106800403A	choke lever ass'y	1
89	21062003640001A	upper handle	1
90	2106600019A	handle sheath	1
91	21062002750001A	driving pole	1
92	21062003680002A	flameout pole	1
93	21077000462188A	grass catcher	1
94	2107300008A	grass catcher bracket	1
95	2100X00643	rear flap ass'y	1
96	21041001163206A	pressing plate	1
97	2109800022C	spring	1
98	21041001150182A	mulching kit knob	1
99	21061000930001A	mulching kit	1
100	A26800104601A	self-tapping screw	2
101	A26800103202	self-tapping screw	2
102	21071000050001N	grass catcher handle	1
103	21071000073208B	grass catcher cover	1
104	2012200002A	wrench	1
105	2012100004A	wrench pole	1
106	3043301003	open block ring	1
107	2103300040A	locking mechanism fixed shaft	1
108	2103800011A	locking mechanism spring	1
109	2103200254A	locking mechanism	1
110	21071000080002A	level indicator	1



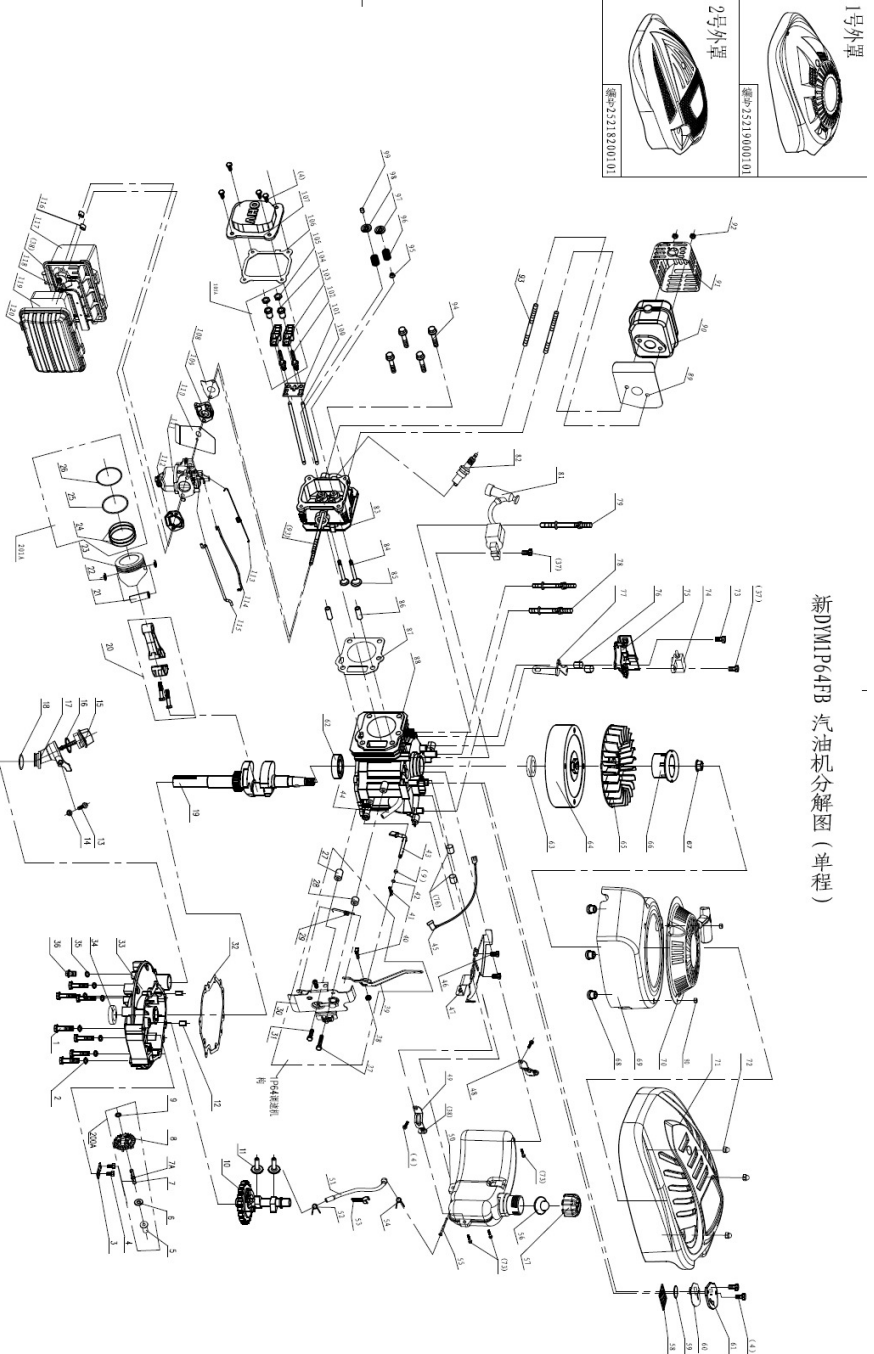


CAMON

OUTDOOR POWER EQUIPMENT

MOTOR DG450 CORTACÉSPED CAMON 1626CQ

NºFig.	Referencia	Descripción(en)	Nº(pcs)
1	A26800607601	bolt M6*30	7
2	A26800702501	wave washer ε 6	7
3	2031200015B	dualhole pressing plate	1
4	A26800604101	bolt M5*12	8
5	2032100002B	slide sheath	1
6	A26800703201	flat washers ε 6* ε 15*0.5	1
7	2032300076B	speed adjustment gear shaft	1
7A	A26800900701	shaft steelwire block ring	1
8	2032300039N	speed adjustment gear ass'y	1
9	A26800702101	flat washer	2
10	2032300038B	nylon crankshaft ass'y	1
11	2033300006F	tappet valve	2
12	2031400010B	position fixed pin	2
13	A26800608801	bolt M5*20	1
14	A26800503501	bolt M5	1
15	20351000480031B	oil dipstick	1
16	2031600012A	oil sealing ring 25*3.1	1
17	20351000500001B	oil adding pipe	1
18	2031600010	oil sealing ring 20*2.4	1
19	2032300015A	crankshaft ass'y	1
20	2032400010A	connecting rod ass'y	1
21	2032400006E	piston pin	1
22	2032200004A	piston pin clip spring	2
23	2032400017B	piston	1
24	2032300053B	combination oil ring	1
25	2032300051B	piston ring 2	1
26	2032300050B	piston ring 1	1
27	2032400001A	sheath 1	1
28	2031300077A	sheath 2	1
29	2031800010A	speed adjustment spring	1
30	2031300021C	speed adjustment ass'y	1
31	3091307003	flange bolt M6*32	1
32	2032600017B	crankcase cover gasket	1
33	2031400038N	cylinder body cover	1
34	2031600016N	oil ring FB25*38*7	1
35	2031300007A	oil plug washer	2
36	2031300006A	oil drain plug	2
37	3091307002	flange bolt M6*25	3
38	A26800501901	bolt M6	6
39	2031300015C	speed adjustment arm	1
40	2031300012A	speed adjustment bolt	1
41	2031200007A	elastic pin	1
42	2031600007	oil ring FB6*11*4	1
43	2032300073B	speed adjustment pole	1
44	2031600025C	ventilation hose	1
45	2038800012B	frameout cord ass'y	1
46	A26800610901	bolt M6*16	2
47	2035200018D	fuel tank bracket	1
48	2035200016B	left fuel tank bracket	1
49	2035200017B	right fuel tank bracket	1
50	2035100001A	fuel tank	1
51	2035600002D	fuel hose	1
52	2035200033A	fuel hose clamp B	1
53	2035200012A	fuel hose clamp	1
54	2035200003B	fuel hose clamp A	1
55	2035100003A	fuel filter	1
56	2035600001B	fuel tank sealing washer	1
57	20351000020001A	fuel tank cap	1
58	2031300075A	filter net	1
59	2035100043A	breathing valve washer	1
60	2031900010A	breathing sealing washer	1
61	2031200010D	breathing cover ass'y	1
62	A26800400201	rolling bearing 6205 E grade	1
63	2031600060N	oil sealing FB22*35*7	1
64	2038400011E	flywheel ass'y	1
65	2032100012001B	fan	1
66	2032200010B	grassive tray	1
67	3032303002	nut M14*1.5	1
68	2031400012A	wind-guiding cover sheath	3
69	20331000210001C	wind-guiding cover	1
70	2030000016	starter ass'y	1
71	20341000160001A	engine cover	1
72	A26800501603A	cap nut	3
73	A26800608301	flange bolt M6*20	1
74	2038800010B	frameout switch ass'y	1
75	2031300031B	moving control ass'y	1
76	A26800703001	washer sheath	2
77	2035200038C	bracket for oil adding tube	1
78	A26800614401	dual head bolt B	2
79	A26800614301	dual head bolt A	1
80	A26800502201	hex. Nut M6	3
81	2038900002A	ignition ass'y	1
82	2038900001B	spark F6RTC	1
83	2031400018A	cylinder head	1
84	2036300014D	exhaust valve	1
85	2037300011D	exhaust valve	1
86	2031400011B	piston fixed pin	2
87	2031600045A	cylinder head gasket	1
88	2031400016D	cylinder	1
89	2037900001A	muffler gasket	1
90	2037200014C	muffler ass'y	1
91	2037200013A	muffler guard ass'y	1
92	3032306001	flange self-locking nut M6	2
93	A26800609901	nut screwM6*90.5	2
94	A26800605001	flange nut M8*45	4
95	2036200010A	oil block sheath	1
96	2036800012A	valve spring	2
97	2036300001A	intake valve retainer	1
98	2037200030C	exhaust valve retainer	1
99	2036300033B	top cat	1
100	2036200011B	pushing rod ass'y	2
101	2036200015B	pushing rod guide plate	1
102	2031300002C	adjustment bolt	2
103	2036300015C	rocket arm	2
104	2031200002D	adjustment nut	2
105	2031300003C	lock nut	2
106	2031600003B	cylinder head cover sealing gasket	1
107	2031200001A	cylinder cover	1
108	2036600010A	cylinder head and intake sealing gasket	1
109	2036100011B	intake hose	1
110	2036100013A	intake hose and carburetor sealing gasket	1
111	2036400019N	carburetor ass'y	1
112	2036600022C	filter sealing gasket	1
113	2032400002B	accelerograph spring	1
114	2035300017A	valve rod	1
115	2031300082A	wind door stopping pole	1
116	2031300008B	filter sheath	2
117	20361000250001B	filter base	1
118	20361000260001A	inner cover for filter	1
119	2036900015B	empty filter core	1
120	20361000240001A	upper cover for filter	1
209A	2030X00030	speed adjustment gear ass'y	1
201A	2032300027N	piston combination	1



新DMM164FB 汽油机分解图 (单程)